

# LightWise®



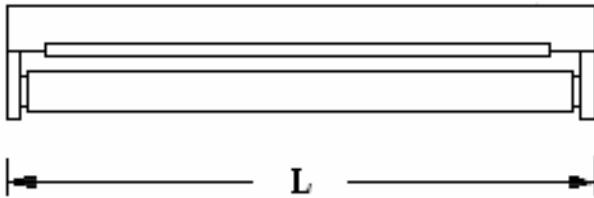
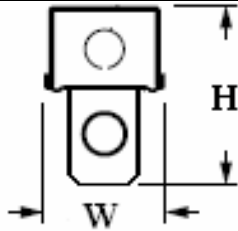
## OPENSTRIP LIGHT

### DESCRIPTION

CATALOG	ELECTRONIC BALLAST	LAMP TYPE	NO. OF LAMPS
DL363	DXE130M8	F30T8	1

### ELECTRICAL CHARACTERISTICS

INPUT VOLTAGE	INPUT CURRENT	INPUT WATTS	FREQUENCY
120V	0.43A	28W	60HZ



### PHYSICAL DIMENSIONS

UNITS	M	L	W	H
INCHES	34.60"	36.09"	2.56"	3.35"
TOL(+/-)	0.05	0.05	0.05	0.05

### CARTON DIMENSIONS

UNITS	L	W	H
INCHES	36.61"	3.15"	2.05"

### FEATURES

- Factory mounted, pre-wired sockets cut installation time.
- allows inconspicuous placement in confined spaces.
- 1 quarter-turn fastener secures wireway cover to housing.
- End plates used as channel connector for continuous row applications.
- Ballast secured by 2 captive bolts and nuts to ensure tight, reliable fit for maximum heat dissipation and minimal ballast noise.
- All parts painted after fabrication to facilitate installation, increase efficiency, and inhibit rusting.

### SPECIFICATIONS

- HOUSING - 22 Ga. die formed C.R.S. or optional .040" aluminum.
- FINISH - white powder coating with 5-stage iron/phosph prepared metal. 92% minimum average reflectance.
- ELECTRICAL - electronic ballast standard, rated Class
- LABELS - UL listed as fluorescent fixture suitable for damp locations. CUL listing for Canada available-consult factory.
- MOUNTING-surface or suspended.

### PRODUCT PHOTO

